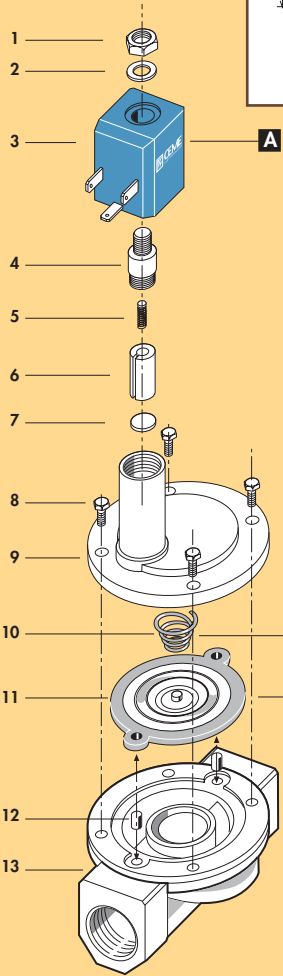
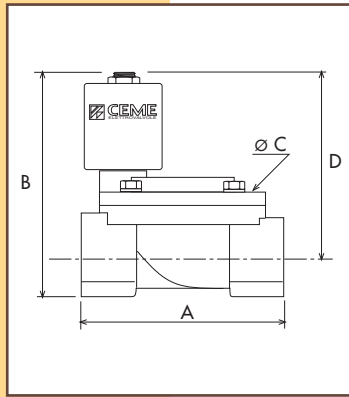


SPECIFICATIONS

ATTACCHI PIPES in → out	Ø mm	CODICE CODE	KV m ³ /h	M.O.P.D. bar		DIMENSIONI/DIMENSIONS mm				PESO/WEIGHT Kg
				AC	DC	A	B	C	D	
G 3/8	12	8513	1.86	10	10	61	73	48	60	0.450
G 1/2	12	8514	2.10	10	10	61	73	48	60	0.400



ELECTRICAL INFORMATION

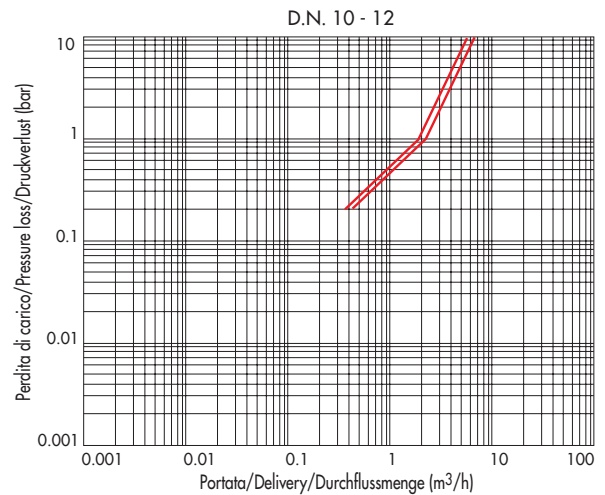
					POTENZA/POWER						
	NOMINALE HOLDING		SPUNTO IN RUSH								
V~	12	24	48	110	230	400	50	60	Hz	11VA	14,5VA
V=	12	24	48	110						9W	

For construction details of the coil see chapter "PROJECT INFORMATION"

MAX TEMPERATURE

FLUIDS				AMBIENT
NBR	EPDM	EPDM/KTW	FPM	80°C
90°C	130°C	130°C	150°C	

PRESSURE LOSS DIAGRAM

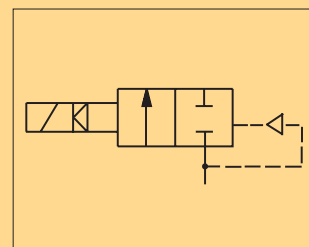


1	Lock nut	
2	Washer	
3	Coil	
4	Tube top	
5	Spring	
6	Plunger	
7	Seal	
8	Screw	
9	Valve body top	
10	Spring	
11	Diaphragm	
12	Bush	
13	Valve body base	
SPARE PARTS		
A	Coil	
B	Spring	
C	Diaphragm	





KTW



UK

GENERAL FEATURES

MINIMUM DIFFERENTIAL WORKING PRESSURE 0,25 bar

PARTS IN CONTACT WITH THE FLUID

SEALING NBR on request FPM - EPDM

EPDM-KTW sealing approved and DVGW certified for interception of potable water

BODY BRASS

INTERNAL PARTS STAINLESS STEEL

FLUIDS AIR - WATER - LIGHT OILS

ONE WAY DIRECTION VALVE

SERVICEABLE VALVE

VALVE SUPPLIED WITH THREE POLE PLUG CONNECTOR UNI ISO 6952 (DIN 43650B)-IP65

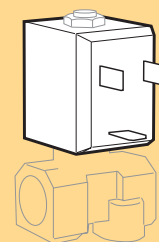
MOUNTING POSITION Any, the position with the coil downwards is not recommended.

AMBIENT TEMPERATURE 80°C, in D.C. for temperatures higher than 40°C, the performances (M.O.P.D.) could decrease.

SPECIAL EXECUTIONS

- VERSION WITH WATER HAMMER DEVICE FOR SLOWER CLOSING TIME.

- VERSION WITH KTW HOMOLOGATION.



COIL TYPE B4